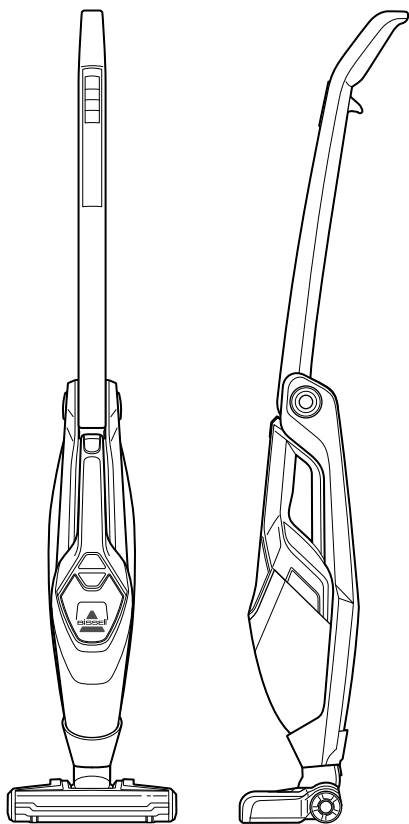


MULTIREACH™ ION XL

2-in-1 Cordless Vacuum

USER GUIDE
1971/2048 SERIES



IMPORTANT SAFETY INSTRUCTIONS

READ ALL INSTRUCTIONS BEFORE USING YOUR VACUUM.

When using an electrical appliance, basic precautions should be observed, including the following:

WARNING TO REDUCE THE RISK OF FIRE, ELECTRIC SHOCK, OR INJURY:

- » This appliance can be used by children aged from 8 years and above and persons with reduced physical, sensory or mental capabilities or lack of experience and knowledge if they have been given supervision or instruction concerning use of the appliance in a safe way and understand the hazards involved. Children shall not play with the appliance. Cleaning and user maintenance shall not be made by children without supervision.
- » Do not use outdoors or on wet surfaces.
- » Do not allow to be used as a toy.
- » Close attention is necessary when used by or near children.
- » Do not use for any purpose other than described in this User's Guide.
- » Use only manufacturer's recommended attachments.
- » Do not use with damaged cord or plug.
- » If appliance is not working as it should, has been dropped, damaged, left outdoors, or dropped into water, have it repaired at an authorized service center.
- » Do not pull or carry by cord, use cord as a handle, close a door on cord, or pull cord around sharp edges or corners. Do not run appliance over cord. Keep cord away from heated surfaces.
- » Do not unplug by pulling on cord. To unplug, grasp the plug, not the cord.
- » Do not handle charging base, including plug and charging base terminal with wet hands.
- » Do not charge the unit outdoors.
- » Use only the charger supplied by the manufacturer to recharge.
- » Do not incinerate the appliance even if it severely damaged. The batteries can explode in a fire.
- » Do not put any object into opening.
- » Do not use with any opening blocked.
- » Keep openings free of dust, lint, hair and anything that may reduce airflow.
- » Keep hair, loose clothing, fingers, and all parts of body away from openings and moving parts.
- » Use extra care when cleaning stairs.
- » Do not pick up flammable materials (lighter fluid, gasoline, kerosene, etc.) or use in the presence of explosive liquids or vapors.
- » Always turn off this appliance before connecting or disconnecting the motorized nozzle.
- » Do not pick up toxic material (chlorine bleach, ammonia, drain cleaner, etc.).
- » Do not use vacuum cleaner in an enclosed space filled with vapors given off by oil base paint, paint thinner, some moth proofing substances, flammable dust, or other explosive or toxic vapors.
- » Do not pick up hard or sharp objects such as glass, nails, screws, coins, etc.
- » Do not pick up anything that is burning or smoking, such as cigarettes, matches, or hot ashes.
- » Do not use without dust cup or filters in place.
- » Use only on dry, indoor surfaces.
- » Keep appliance on a level surface.

WARNING

TO REDUCE THE RISK OF ELECTRIC SHOCK - NOT USE OUTDOORS OR ON WET SURFACES. RISK OF FIRE OR INJURY TO PERSONS - NO USER - REPLACEABLE PARTS INSIDE. USE ONLY WITH THE CHARGER MANUFACTURED BY SIL, MODEL SSA-340100EU for 25v, SSA-250100EU for 18v.

SAVE THESE INSTRUCTIONS FOR FUTURE USE

This model is for household use only.

Thanks for buying a MultiReach™ Ion XL!

We love to clean and we're excited to share one of our innovative products with you. We want to make sure your vacuum works as well in years to come as it does today, so this guide has tips on using (page 6), maintaining (pages 7-8), and if there is a problem, troubleshooting (page 9).

Your vacuum needs a little assembly before you can put it to work, so flip to page 5 and let's get started!

What's In The Box?



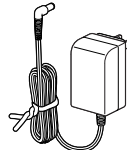
Multi-Surface
Brush Roll



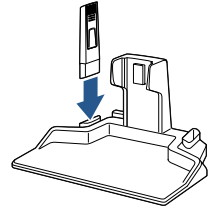
Hardwood Expert
Brush Roll



Crevice Tool
with Dusting
Brush



Charging
Adapter



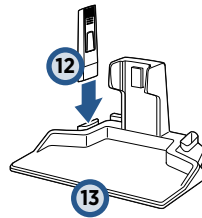
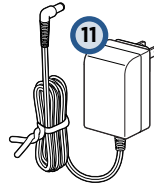
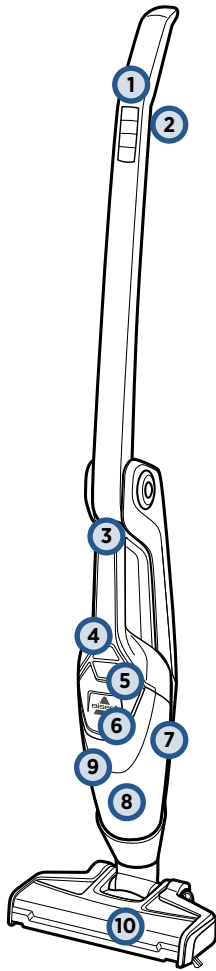
Charging Base w/
Tool Storage

NOTE: Standard accessories may vary by model.

Safety Instructions.....	2
Product View.....	4
Assembly.....	5
Operations.....	6

Maintenance & Care.....	7-8
Troubleshooting.....	9
Guarantee.....	10
Consumer Care.....	10

Getting to Know Your MultiReach™ Ion XL



- 1 Fingertip Controls
- 2 2-Way Folding Handle Release Trigger
- 3 Hand Vac Release Button
- 4 Hand Vacuum Power Button
- 5 Dirt Cup Release
- 6 Charging LED Light Indicator
- 7 Detachable Hand Vacuum

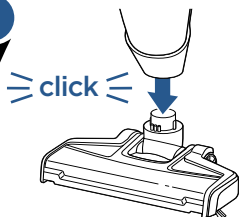
- 8 Dirt Cup
- 9 Washable Filter Assembly
- 10 Foot
- 11 Charging Adapter Cord
- 12 Crevice Tool with Dusting Brush
- 13 Charging Base

Charging

⚠ WARNING

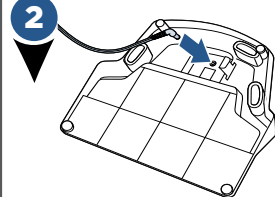
Do not plug in your MultiReach™ Ion XL until you are familiar with all instructions and operating procedures.

1



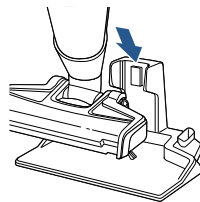
Insert foot into body of the vacuum until you hear a click.

2



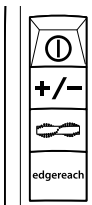
Plug the charging cord in to the port on the underside of the charging base and plug the cord in to the wall.

3



Place the vacuum on the charging base. Make sure the LED lights are lit up to ensure it is connected properly.

Control Buttons



Power Icon = On/Off



Suction Icon = Suction Control



Brush Icon = Brush Roll On/Off



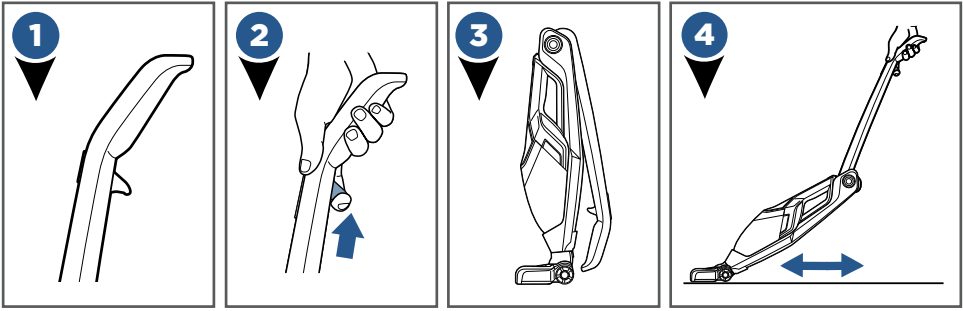
EdgeReach = Edge Cleaning On/Off

NOTE: The brush roll will be ON when the stick vacuum is turned ON. Having the brush roll ON may improve cleaning on soft surfaces such as low-pile area rugs.

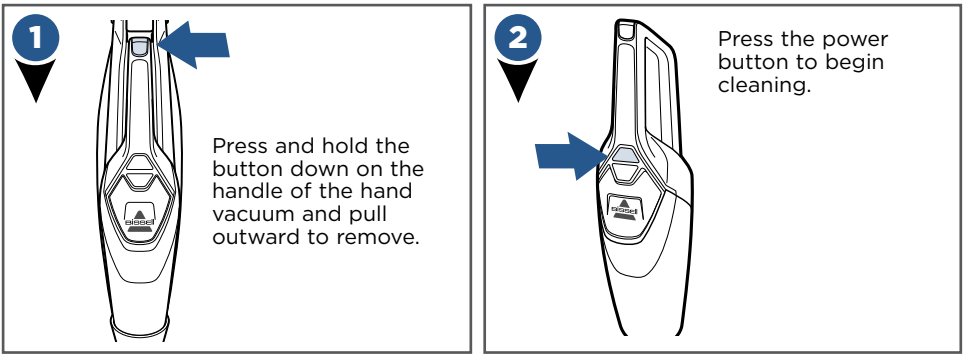
LED Display

Battery Status	LED Color	LED Light Codes
100%	Blue	3 solid lights for 10 minutes, then flashes once per minute
66-99%	Blue	2 lights on, 1 light blinking
33-65%	Blue	1 light on, 1 light blinking
1-32%	Blue	1 light blinking
0%	Red	1 light blinking quickly

Operating 2-Way Folding Handle

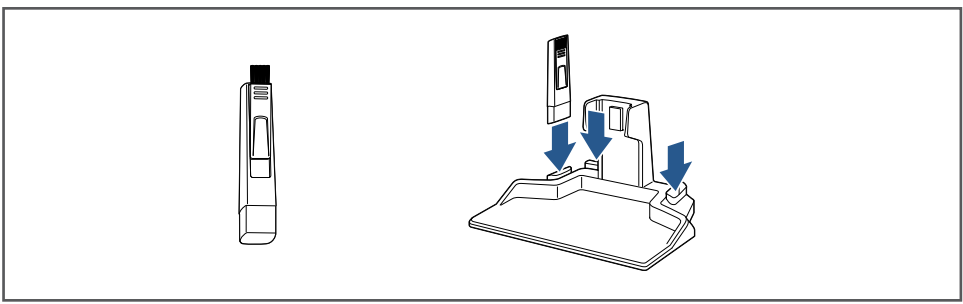


Removable Hand Vacuum



Tools and Storage

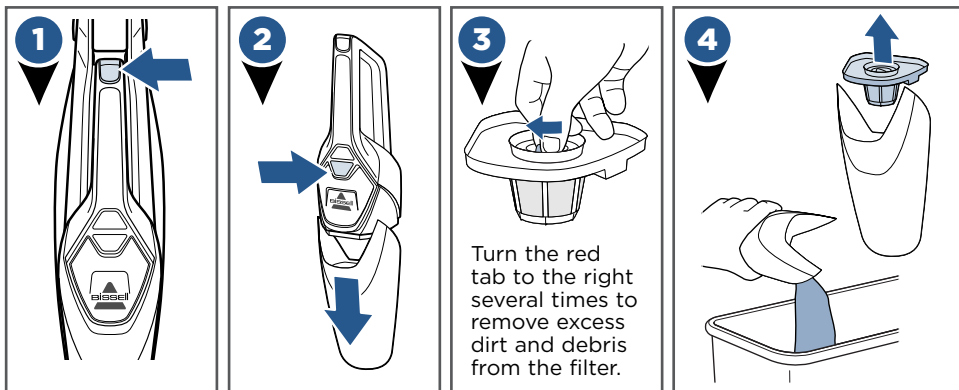
(Some tools included in select models only)



Maintenance: Emptying the Dirt Cup

⚠️ WARNING

To reduce the risk of fire, electric shock or injury, turn power OFF and disconnect plug from electrical outlet before performing maintenance or troubleshooting.

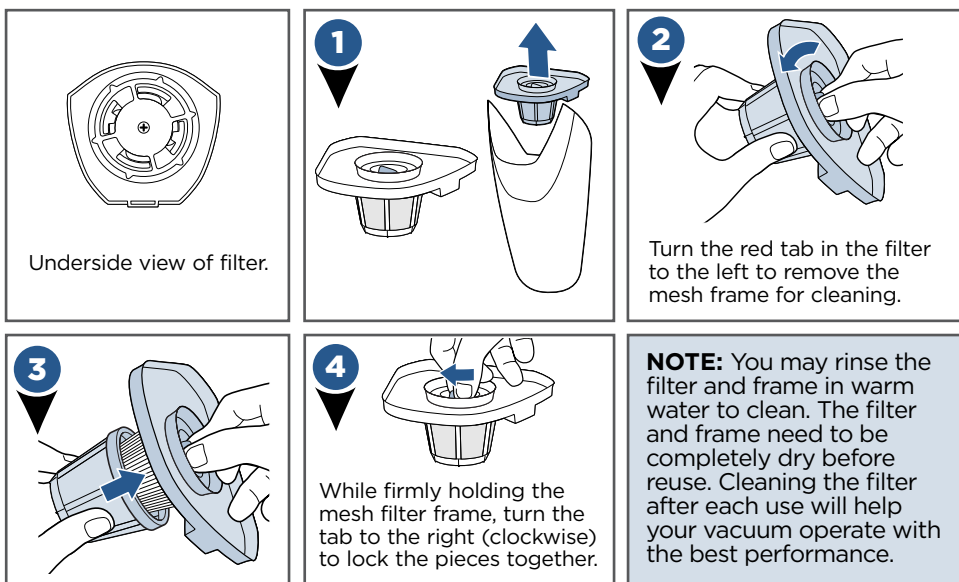


⚠️ WARNING

Do not operate your MultiReach™ Ion XL with damp or wet filters or without filters in place.

Maintenance: Filters

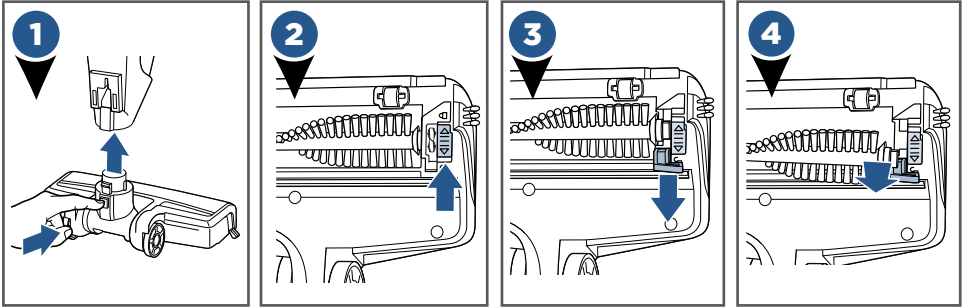
TIP: It may be helpful to turn the filter assembly over and view the underside locking parts before completing steps 1 - 6.



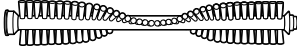
Maintenance: Brush Roll

⚠️ WARNING

Do not operate your MultiReach™ Ion XL with damp or wet filters or without filters in place.



5



Clean your brush roll as needed and place back into foot. Make sure the brush roll cover tab is locked back into place to prevent breaking or faulty brush roll operation.

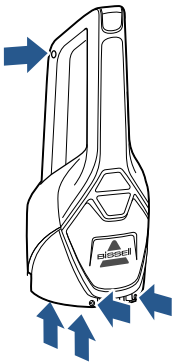
BRUSH ROLL RESET:

If the brush stops turning, turn the unit off and remove any debris that is blocking the brush. Wait 15 seconds and turn the unit back on.

Maintenance: Disposal of Batteries

⚠️ NOTICE

Disconnecting the battery will destroy the appliance and invalidate the warranty.



- Unplug the charger.
- Remove hand vac from unit and remove dirt cup from handle.
- Remove (2) Phillips head screws and remove the lens from the hand vacuum.
- Remove (2) Phillips head screws from the hand vacuum cover.
- Lift off the hand vacuum cover and take out the push rod.
- Remove (5) Phillips head screws from the side of the hand vacuum.
- Remove the entire battery assembly from the cover.
- Cut wires from the PCB and wrap the wire ends with insulation tape.
- Keep Battery Pack together - DO NOT separate individual batteries. For specific disposal instructions of batteries, please follow local regulations.
- Hand in remainder of product at an official collection point for recycling.

Troubleshooting

WARNING

To reduce the risk of fire, electric shock or injury, turn power OFF and disconnect plug from electrical outlet before performing maintenance or troubleshooting.

Problem	Possible causes	Remedies
Vacuum won't turn on	Battery isn't fully charged	Charge battery. Follow charging battery instructions on page 5
	Wrong charger being used	Be sure to use only the charger supplied with your product. The label on the detachable hand vacuum will list which charger can be used.
Brush roll not turning	Brush roll is jammed	Remove obstruction. Follow instructions on page 10
	Brush roll needs to be reset	Follow instructions on page 10
	Broken brush roll belt	Visit www.bissell.com
Vacuum cleaner has low suction	Dirt container is full	Empty dirt container
	Dirt container is not installed properly	Position container correctly and snap firmly into place
	Foot is loose	Make sure foot is fully inserted into body of unit
	Filters need cleaning	Follow filter instructions on page 9
	Filters need replacing	Visit www.bissell.com
	Clog or obstruction in foot area	Detach foot from main body and examine and remove clog from ports
Visible dirt escaping from cleaner	Dirt container is full of debris	Empty dirt container
	Filter is missing or installed incorrectly	Check filter for correct installation
	Dirt container installed incorrectly	Position container correctly and snap firmly into place
Vacuum won't charge	Not the correct charger	Use only the charger that comes with the machine

Please do not return this product to the store.

Other maintenance or service not included in the manual should be performed by an authorized service representative.

Consumer Guarantee

This Guarantee only applies outside of the USA and Canada. It is provided by BISSELL International Trading Company BV ("BISSELL").

This Guarantee is provided by BISSELL. It gives you specific rights. It is offered as an additional benefit to your rights under law. You also have other rights under law which may vary from country to country. You can find out about your legal rights and remedies by contacting your local consumer advice service. Nothing in this Guarantee will replace or lessen any of your legal rights or remedies. If you need additional instruction regarding this Guarantee or have questions regarding what it may cover, please contact BISSELL Consumer Care or contact your local distributor.

This Guarantee is given to the original purchaser of the product from new and is not transferable. You must be able to evidence the date of purchase in order to claim under this Guarantee.

Limited 2 Year Guarantee from the date of purchase by original purchaser

Subject to the *EXCEPTIONS AND EXCLUSIONS identified below, BISSELL will repair or replace (with new or remanufactured components or products), at BISSELL's option, free of charge, any defective or malfunctioning part or product.

BISSELL recommends that the original packaging and evidence of the date of purchase be kept for the duration of the Guarantee period in case the need arises within the period to claim on the Guarantee. Keeping the original packaging will assist with any necessary re-packaging and transportation but is not a condition of the Guarantee.

If for your product is replaced by BISSELL under this Guarantee, the new item will benefit from the remainder of the term of this Guarantee (calculated from the date of the original purchase). The period of this Guarantee shall not be extended whether or not your product is repaired or replaced.

*EXCEPTIONS AND EXCLUSIONS FROM THE TERMS OF THE GUARANTEE

This Guarantee applies to products used for personal domestic use and not commercial or hire purposes. Consumable components such as filters, belts and mop pads, which must be replaced or serviced by the user from time to time, are not covered by this Guarantee.

This Guarantee does not apply to any defect arising from fair wear and tear. Damage or malfunction caused by the user or any third party whether as a result of accident, negligence, abuse, neglect, or any other use not in accordance with the User Guide is not covered by this Guarantee.

An unauthorised repair (or attempted repair) may void this Guarantee whether or not damage has been caused by that repair/attempt.

Removing or tampering with the Product Rating Label on the product or rendering it illegible will void this Guarantee.

SAVE AS SET OUT BELOW BISSELL AND ITS DISTRIBUTORS ARE NOT LIABLE FOR ANY LOSS OR DAMAGE THAT IS NOT FORESEEABLE OR FOR INCIDENTAL OR CONSEQUENTIAL DAMAGES OF ANY NATURE ASSOCIATED WITH THE USE OF THIS PRODUCT INCLUDING WITHOUT LIMITATION LOSS OF PROFIT, LOSS OF BUSINESS, BUSINESS INTERRUPTION, LOSS OF OPPORTUNITY, DISTRESS, INCONVENIENCE OR DISAPPOINTMENT. SAVE AS SET OUT BELOW BISSELL'S LIABILITY WILL NOT EXCEED THE PURCHASE PRICE OF THE PRODUCT.

BISSELL DOES NOT EXCLUDE OR LIMIT IN ANY WAY ITS LIABILITY FOR (A) DEATH OR PERSONAL INJURY CAUSED BY OUR NEGLIGENCE OR THE NEGLIGENCE OF OUR EMPLOYEES, AGENTS OR SUBCONTRACTORS; (B) FRAUD OR FRAUDULENT MISREPRESENTATION; (C) OR FOR ANY OTHER MATTER WHICH CANNOT BE EXCLUDED OR LIMITED UNDER LAW.

Consumer Care

If your BISSELL product should require service or to claim under our limited guarantee, please contact us as follows:

Website:

www.BISSELL.com

Email:

Customers.Bitco@bissell.com

Write:

BISSELL International Trading Company B.V.
Stadhouderskade 55
1072 AB Amsterdam
The Netherlands

Visit the BISSELL website: www.BISSELL.com

When contacting BISSELL, have model number of cleaner available.

Please record your Model Number: _____ Please record your Purchase Date: _____

NOTE: Please keep your original sales receipt. It provides proof of the date of purchase in the event of a Guarantee claim. See Guarantee for details.



©2016 BISSELL Homecare, Inc
Grand Rapids, Michigan
All rights reserved. Printed in China
Part Number 161-0515 11/16 RevC
Visit our website at: www.BISSELL.com